

## House

- Three Story Facility
- Main Floor 3,200 sq. ft. with Stage (Stage Trim 14')
- The Third Floor is a Cafe'/Lounge
- The Palace Underground (Small Underground Space with Kitchen)

## House Lighting Equipment

- Leprecon 624 Stage light board
- Elektralite CP20 Intelligent light board
- Stage Fixtures
  - Sixteen (16) ETC Source Four JR 25-50 degree zoom
  - Twenty Four (24) Source Four Par (3 Lenses)
- One (1) Astroscan 1200hmi
- Eight (8) Clay-Paky mini scans
- Three (3) black lights (Industrial)
- Three (3) Leprecon MX 1200 12 channel 1.2K dimmer packs (DMX IN)
- Eight (8) Diversitronics DMX strobes w/Strobe runner control
- Two (2) Lycan 300W follow spots
- Hanging Positions
  - Electric #1: Five (5) CKTS @ APPROX 12' AFF
  - Electric #2: Five (5) CKTS @ APPROX 12' AFF
  - Electric #3: Six (6) CKTS @ APPROX 12'
  - FoH #1: 10 CKTS @ APPROX 12' From Stage
  - FoH #2: 6 CKTS @ APPROX 14' From Stage
  - FoH #3: 4 CKTS @ APPROX 16' From Stage

The Palace Theater  
A Performing Arts Center

19 Utica Street • Hamilton, NY • 13346 • (315) 824-1420

[WWW.PALACETHEATER.ORG](http://WWW.PALACETHEATER.ORG)

---

### **House Audio Equipment**

- FoH Allen & Heath GL 4000 24 channel
- FoH Speakers 4 JBL Sound Power SP-225-6 (Two per channel (L/R))
- Six (6) Scoops 18" under stage (Dance Floor Subs)
- Four (4) JBL SP 128 S (Dance Floor Subs)
- FOH Amplifiers (Crown)
  - 1202 Macro-Tech (Highs)
  - Three 5002v2 Macro-Tech (Lows)
- Rear Speakers (L/R) JBL SP215-9
  - Crown 1202 Macro Tech (Highs)
  - Crown 2402 Macro Tech (Lows)
  - DBX 481 Drive Rack
- Four (4) Monitor mixes (Stage)
  - Four (4) Yamaha wedges SM15IV
  - Two (2) Crown CE1000
  - Two (2) DBX Graphic EQ 1231
  - Behringer Eurorack MX3242X
- DBX Graphic EQ 3231L (House L/R)
- Two (2) DBX 160A compressor limiter (House L/R)
- One (1) DBX 1074 quad gate
- One (1) Yamaha SPX 990 effects processor
- One (1) Crown US810 IQ digital processor mixer (House Audio Distribution)
- Five (5) Matchbox DB25 (DI Boxes)
- Sixteen (16) Assorted XLR cables

### **Microphones/Stands**

- Four (4) Beta 58A
- Two (2) Beta 57A
- One (1) Akg C414 B-XLS
- Six (6) Countryman E6 Earset
- Four (4) Beringer B-1
- Shure drum kit (Three (3) PG-56 & One (1) PG-52)
- Four (4) Sennheiser E835
- Ten (10) Sennheiser wireless microphones.
  - Two (2) Handheld
  - Eight (8) Belt-packs
- Ten (10) boom-style microphone stands/Two (2) short stands/One (1) kick-drum stand

The Palace Theater  
A Performing Arts Center

19 Utica Street • Hamilton, NY • 13346 • (315) 824-1420  
[WWW.PALACETHEATER.ORG](http://WWW.PALACETHEATER.ORG)

---

### **DJ Equipment**

- Two (2) Technics SL1200 turntables
- Denon 2600 dual CD player
- Rane MP24x mixer
- Two (2) JBL EON 15g2 powered speakers (two way) (Booth Monitors)

### **Remote DJ coffin**

- Two (2) Technics SL1200 turntables
- Denon 2600 dual CD player
- Rane MP24x mixer

### **Communication**

- Clear-com 2 channel Intercom system, six belt-packs with headsets

### **Video**

- Mitsubishi x400 projection television
- 15' electronic screen
- Two (2) Sony DVD players
- Panasonic Digital AV Mixer WJ-MX20 and dual video monitors
- Sony VCR
- Closed Circuit Video Distribution

### **Stage Curtains (Black)**

- Main Curtain
- Rear Curtain
- Four (4) Legs (Two (2) Per Side)

### **Underground**

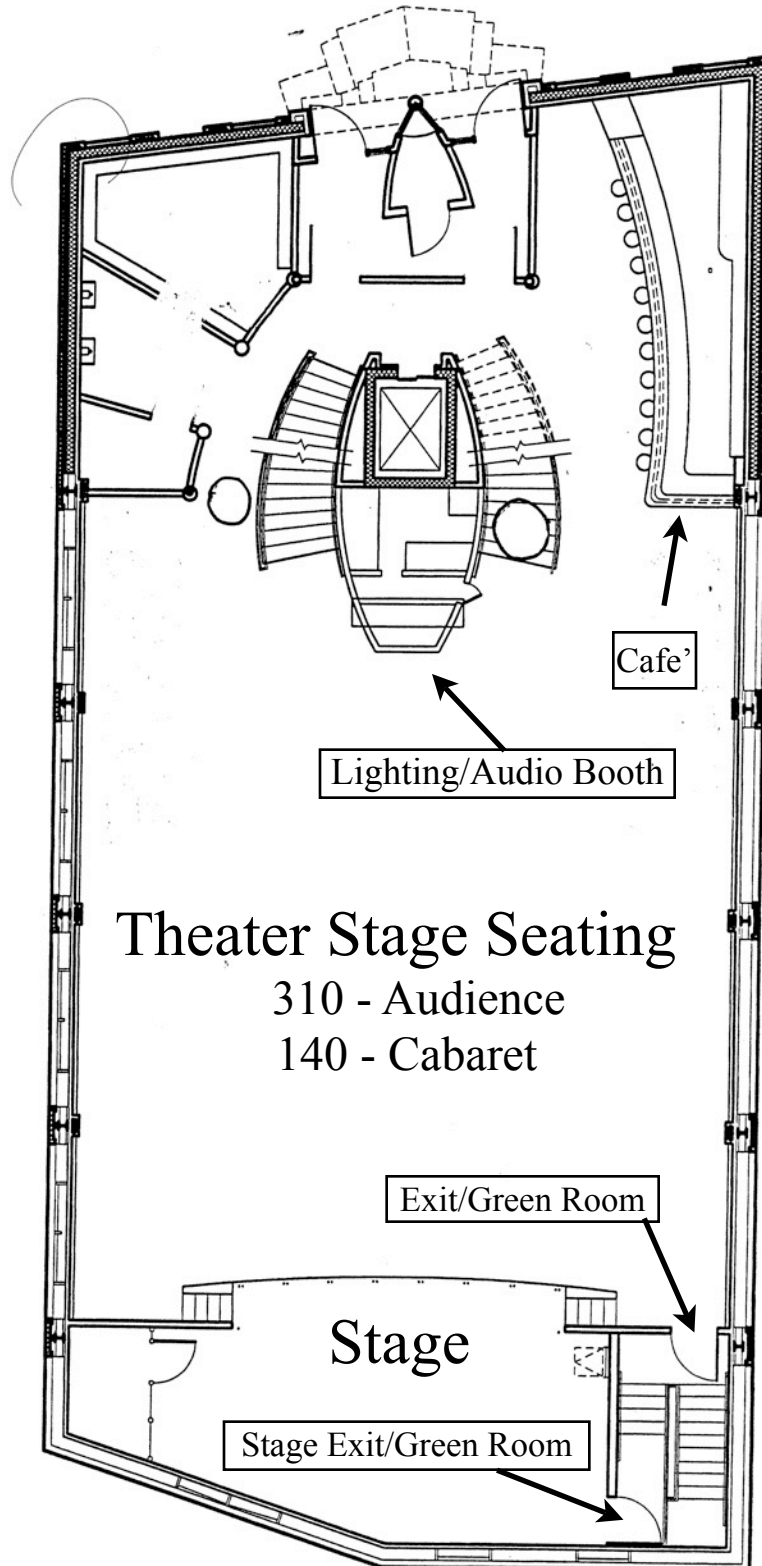
- Euro Light LC2412
- Four (4) Cans
- JBL Satellite Speaker system
- Two (2) Crown Com-Tech 810

The Palace Theater  
A Performing Arts Center

19 Utica Street • Hamilton, NY • 13346 • (315) 824-1420  
[WWW.PALACETHEATER.ORG](http://WWW.PALACETHEATER.ORG)

---

Main Floor



The Palace Theater  
A Performing Arts Center

19 Utica Street • Hamilton, NY • 13346 • (315) 824-1420  
[WWW.PALACETHEATER.ORG](http://WWW.PALACETHEATER.ORG)

Stage

NOTES:

THEATER STAGE SEATING:

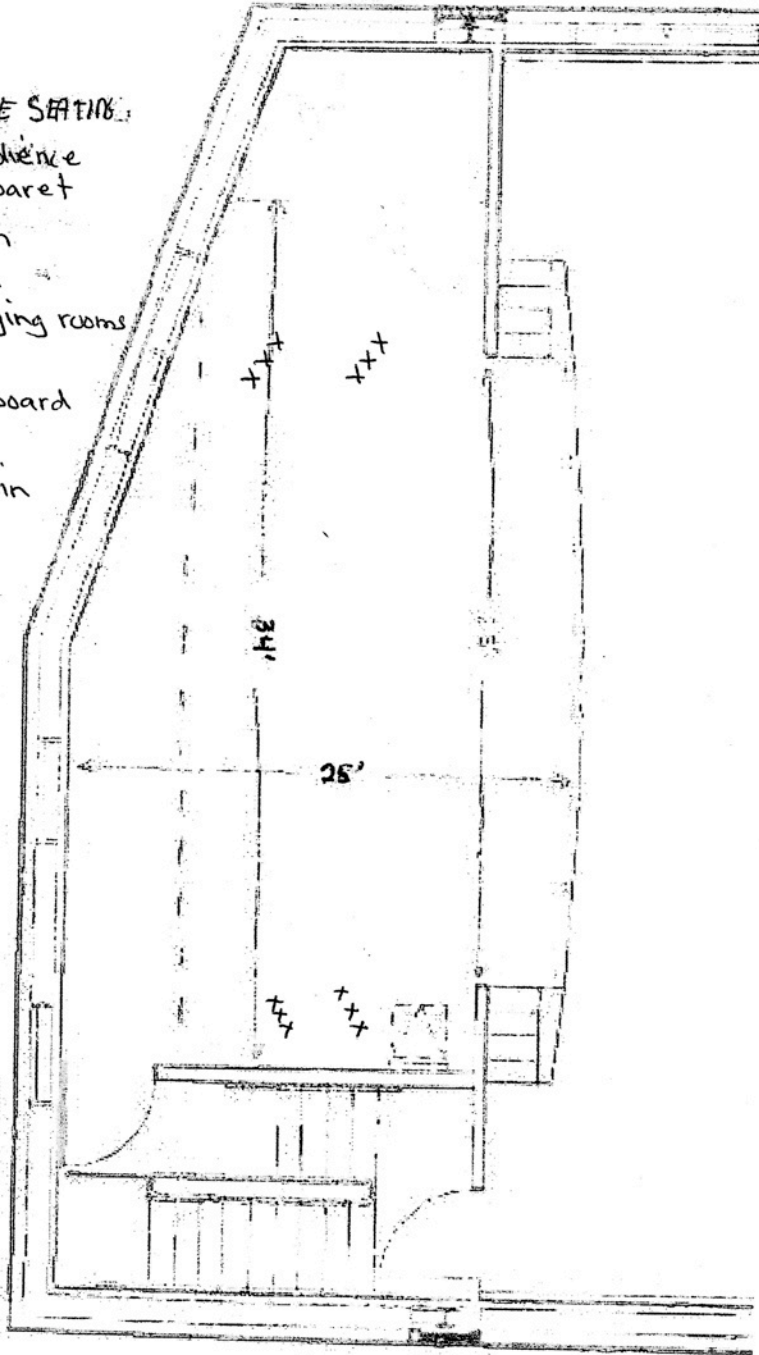
310 - audience  
140 - cabaret

GREEN ROOM

- 1/2 bath
- 2 changing rooms
- mirrors
- iron + board

Key

- - - - curtain
- xxx wings



PALACE THEATER LLC.  
HAMILTON N.Y.

palacetheater.org